

A high-angle photograph of a middle-aged couple smiling and looking down at a wooden staircase. The man, with grey hair and a beard, wears a light blue and white striped button-down shirt. The woman, with dark curly hair, wears a light-colored blouse. They are standing on a wide wooden staircase with a dark wood handrail. To the left, a large green plant with broad leaves sits on the floor. The background shows a stone wall and a window. The overall atmosphere is warm and inviting.

LIFEWOOD

2021 RETAIL PRICE GUIDE

Contents

Learn about our patented timber flooring design and discover the price of your floor, fully installed.

① *Meet Our Consultants*

Our timber flooring consultants are readily available to help you with all questions related to product choice, design and installation methods.

② *Product Selection*

See our full range of timber flooring, board only price complete with dimensions and coating options.

③ *Australian Timber & French Oak*

Price table with supply and installation price per square metre.

④ *American Black Walnut, Hickory & Teak*

Price table with supply and installation price per square metre.

⑤ *Stairs & Wall Panelling*

Get inspired with our stair and wall panelling creations.

⑥ *Our Technology*

See what's inside our patented timber flooring technology.

Meet Our Showroom Consultants



Tony George



Richard Brain



Mitchell Newton



Visit Our Showroom Today

18 Hector Street West, Osborne Park

In a quick 20 minute visit one of our consultants can show you our full range of floors, all laid in our Osborne Park showroom, and go over the following points.

- What type of timber is suitable for your family and lifestyle
- What colour and feature blends well with your decor
- The different installation options available
- Intricate details such as stair nosings or curved walls
- Available additions such as skirting, carpet removal, moving furniture

Plus, we will put together a sample bag of your preferred options so you can share with your friends and family.



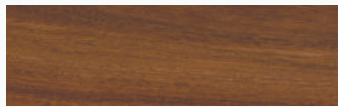
Product Selection

Our full range of products are all laid in our Osborne Park showroom and samples are available on request.

AUSTRALIAN TIMBER



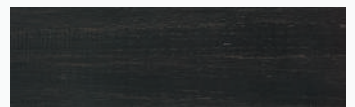
☐ NSW Blackbutt



☐ Spotted Gum



☐ Marri



☐ Black Jarrah



☐ Jarrah



☐ W.A. Blackbutt



☐ Grey Iron Bark

Boards only: **\$130/m²**
\$155/m²

Width: 130mm / Length: 1820 - 2100mm / Thickness: 15mm / Finish: semi-gloss
Width: 180mm / Length: 1820 - 2100mm / Thickness: 15mm / Finish: satin

FRENCH OAK



☐ Limed Wash



☐ Antique White



☐ Driftwood



☐ Natural



☐ Smoked



☐ Shou Sugi Ban



☐ Black Forest



☐ Charcoal

Boards only: **\$145/m²**

Width: 220mm / Length: 2200mm / Thickness: 15mm / Finish: matte

INTERNATIONAL SPECIES



☐ American Black Walnut



☐ American Hickory



☐ Teak

Boards only:
\$179/m² 180mm

Boards only:
\$120/m² 180mm

Boards only:
\$209/m² 180mm

Width: 180mm / Length: 1820 - 2100mm / Thickness: 15mm / Finish: satin

LIFEWOOD

Supply & Install Price Guide



Meter ²	Australian Timber 130mm - Semi Gloss \$199/m ²	Australian Timber 180mm - Satin Finish \$219/m ²	French Oak 220mm - Matte Finish \$209/m ²
60	\$11,940	\$13,140	\$12,540
80	\$15,920	\$17,520	\$16,720
100	\$19,900	\$21,900	\$20,900
120	\$23,880	\$26,280	\$25,080
140	\$27,860	\$30,660	\$29,260
160	\$31,840	\$35,040	\$33,440
180	\$35,820	\$39,420	\$37,620
200	\$39,800	\$43,800	\$41,800
220	\$43,780	\$48,180	\$45,980
240	\$47,760	\$52,560	\$50,160
260	\$51,740	\$56,940	\$54,340
280	\$55,720	\$61,320	\$58,520
300	\$59,700	\$65,700	\$62,700

LIFEWOOD

Supply & Install Price Guide



Meter²

Black Walnut
180mm - Satin Finish
\$269/m²

Hickory
180mm - Satin Finish
\$189/m²

Teak
180mm - Satin Finish
\$269/m²

60

\$16,140

\$11,340

\$16,140

80

\$21,520

\$15,120

\$21,520

100

\$26,900

\$18,900

\$26,900

120

\$32,280

\$22,680

\$32,280

140

\$37,660

\$26,460

\$37,660

160

\$43,040

\$30,240

\$43,040

180

\$48,420

\$34,020

\$48,420

200

\$53,800

\$37,800

\$53,800

220

\$59,180

\$41,580

\$59,180

240

\$64,560

\$45,360

\$64,560

260

\$69,940

\$49,140

\$69,940

280

\$75,320

\$52,920

\$75,320

300

\$80,700

\$56,700

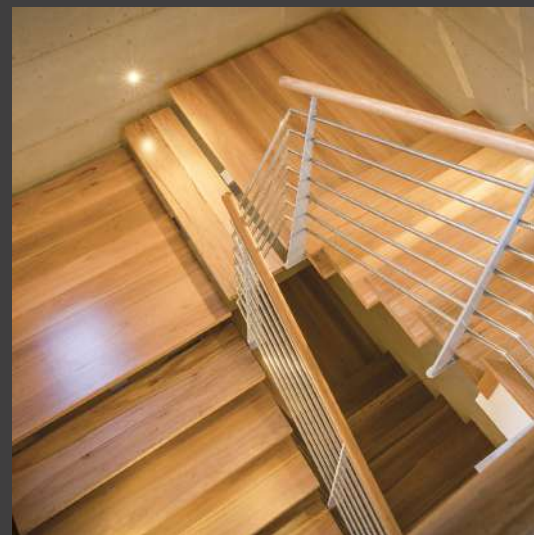
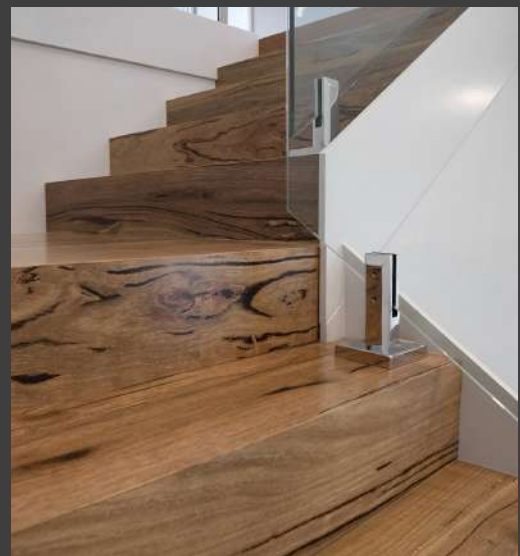
\$80,700



Stairs and Walls

A beautifully designed floor can only reach its full potential if it's installed by highly skilled craftsmen.

All of our installers are hand selected for their craftsmanship, family values, and passion for creating amazing flooring centrepieces.



Our Technology

With Lifewood patented “Stabilised Solid” technology we can guarantee your floor will last a lifetime.



- ① *No cheap substitutes*
Each layer uses the same hardwood, creating superior stability and a higher resistance to termites.
- ② *Hand selected boards*
Only the highest grade boards are selected for the top layer, creating colour consistency and a beautiful looking floor.
- ③ *Patented hardwood core*
Our unique engineering method helps stabilise the board and prevents the natural movement of wood, which can result in cupping and shrinking.
- ④ *100% sustainable*
No part of the tree is wasted. No other timber is required to construct our floorboards.
- ⑤ *Hard wearing coatings*
Our custom formulated coatings bring our floors to life, highlighting their natural beauty and protecting them from damage.
- ⑥ *Resandable*
Our boards have a thick surface layer which can be sanded multiple times. Lifewood floors are designed to last a lifetime.
- ⑦ *Low emissions*
We use very low emission glue that is safe in your home and guarantees the boards do not delaminate.
- ⑧ *Moisture resistant*
Our patented core design prevents moisture getting into the board. We then coat the entire board in a moisture barrier for added protection.